



MOUNTGRANGE
HERITAGE



Lexham Gardens, W8

£1,300 per week Fees May Apply

A bright and spacious top floor flat with two bedrooms, a study area and south-facing views over mature gardens. The property has a newly refurbished bathroom, a separate eat-in kitchen and a spacious naturally bright reception room. The large principal bedroom comprises of built-in storage as well as views overlooking the mature gardens to the rear.

2 Bedrooms | 1 Reception Room | 2 Bathrooms
Furnished

Kensington Office

13b Stratford Road, London W8 6RF

020 7937 9976

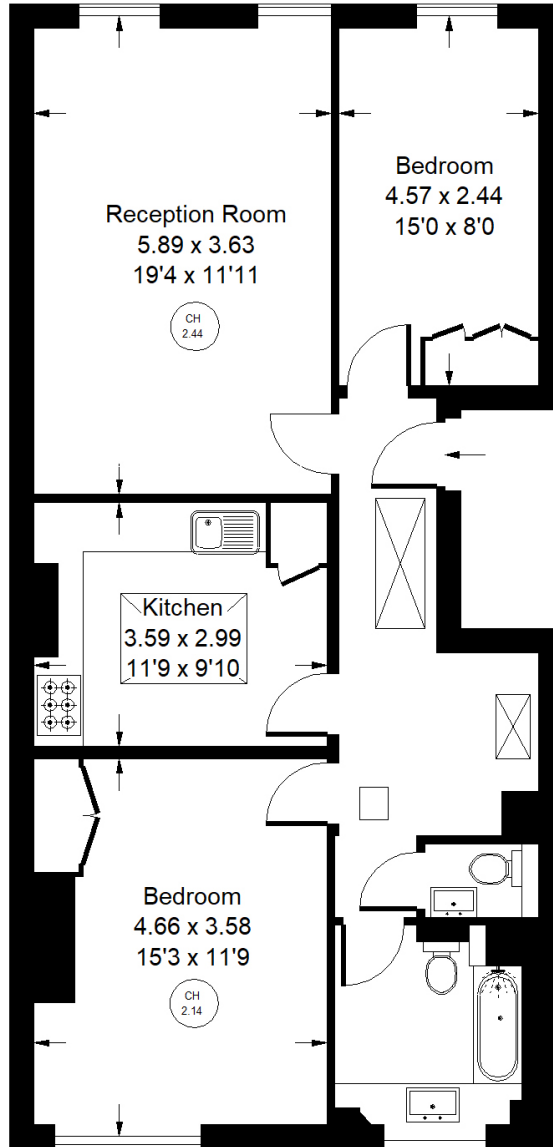
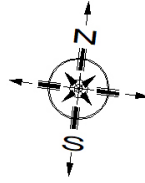
lettings.ken@mountgrangeheritage.co.uk

Other offices North Kensington - Notting Hill

mountgrangeheritage.co.uk

Lexham Gardens, W8

Approx. Gross Internal Area
81.5 sq m / 878 sq ft



Fourth Floor

Whilst every attempt has been made to ensure the accuracy of the floor plan, measurements are approximate and not to scale.
No guarantee is given on the total square footage of the property quoted on the plan. Figures given are for guidance.
Plan is for illustration purposes only, not to be used for valuations.

Energy performance certificate (EPC)

Flat 69 Lexham Gardens LONDON W8 6JH	Energy rating D	Valid until: 24 October 2029
		Certificate number: 2448-2945-6210-6331-4940

Property type	Top-floor flat
Total floor area	67 square metres

Rules on letting this property

Properties can be let if they have an energy rating from A to E.

You can read [guidance for landlords on the regulations and exemptions](https://www.gov.uk/guidance/domestic-private-rented-property-minimum-energy-efficiency-standard-landlord-guidance) (<https://www.gov.uk/guidance/domestic-private-rented-property-minimum-energy-efficiency-standard-landlord-guidance>).

Energy rating and score

This property's energy rating is D. It has the potential to be D.

[See how to improve this property's energy efficiency.](#)

The graph shows this property's current and potential energy rating.

Properties get a rating from A (best) to G (worst) and a score. The better the rating and score, the lower your energy bills are likely to be.

For properties in England and Wales:

the average energy rating is D
the average energy score is 60

Score	Energy rating	Current	Potential
92+	A		
81-91	B		
69-80	C		
55-68	D	59 D	64 D
39-54	E		
21-38	F		
1-20	G		

IMPORTANT NOTICE

Mountgrange Heritage and their clients give notice that: 1) They are not authorised to make or give any representations or warranties in relation to the property either here or elsewhere, either on their own behalf or on behalf of their client or otherwise. They assume no responsibility for any statement that may be made in these particulars. These particulars do not form part of any offer or contract and must not be relied upon as statements or representations of fact. 2) Any areas, measurements or distances are approximate. The text, photographs and plans are for guidance only and are not necessarily comprehensive. It should not be assumed that the property has all necessary planning, building regulation or other consents and Mountgrange Heritage have not tested any services, equipment or facilities. Purchasers must satisfy themselves by inspection or otherwise.