



MOUNTGRANGE
HERITAGE



Kensington Court, W8

£1,225 per week Fees May Apply

A fabulous two bedroom flat located on the first floor in this beautiful mansion block less than a minute away from Kensington High Street.

2 Bedrooms | 2 Reception Rooms | 2 Bathrooms
Unfurnished

Kensington Office

13b Stratford Road, London W8 6RF

020 7937 9976

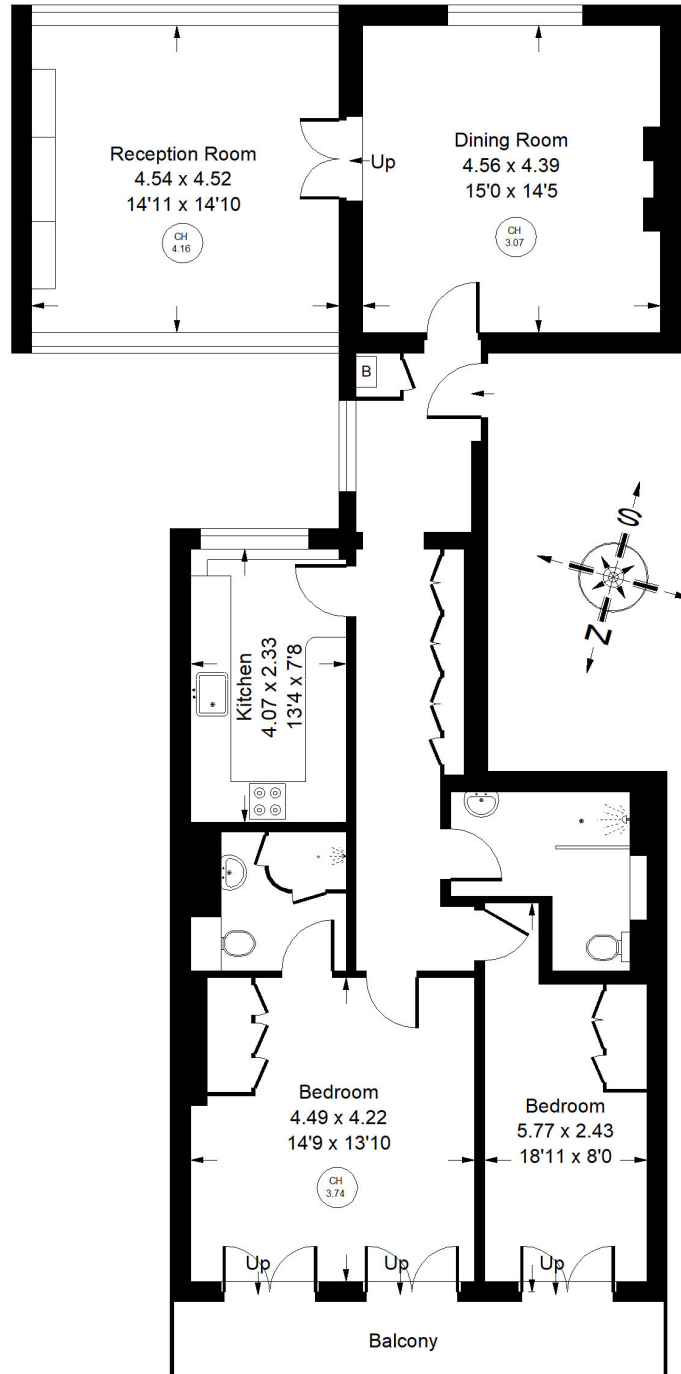
lettings.ken@mountgrangeheritage.co.uk

Other offices North Kensington - Notting Hill

mountgrangeheritage.co.uk

Kensington Court, W8

Approx. Gross Internal Area
112.5 sq m / 1211 sq ft



First Floor

Whilst every attempt has been made to ensure the accuracy of the floor plan, measurements are approximate and not to scale.
No guarantee is given on the total square footage of the property quoted on the plan. Figures given are for guidance.
Plan is for illustration purposes only, not to be used for valuations.

Energy performance certificate (EPC)

Flat 20 Kensington Court LONDON W8 5DW	Energy rating B	Valid until: 30 August 2030 Certificate number: 8570-6428-7990-9446-5226
Property type	Mid-floor flat	
Total floor area	110 square metres	

IMPORTANT NOTICE

Mountgrange Heritage and their clients give notice that: 1) They are not authorised to make or give any representations or warranties in relation to the property either here or elsewhere, either on their own behalf or on behalf of their client or otherwise. They assume no responsibility for any statement that may be made in these particulars. These particulars do not form part of any offer or contract and must not be relied upon as statements or representations of fact. 2) Any areas, measurements or distances are approximate. The text, photographs and plans are for guidance only and are not necessarily comprehensive. It should not be assumed that the property has all necessary planning, building regulation or other consents and Mountgrange Heritage have not tested any services, equipment or facilities. Purchasers must satisfy themselves by inspection or otherwise.